

YOUTH OPEN CLASS CATTLE DEPARTMENT #10



Pre-Registration Deadline:	July 1, 2020
Check in:	July 11th, 2020. 7:30am-8:30am
Show:	July 11th, 2020. 9:00am
Entry Fee:	Pre- Registration Postmarked by July 1, 2020: \$30.00 (15.00 for calves). After July 1, 2020: \$40.00 Per Head
Location:	Chance Ridge • 506 Skyline Rd • Elkhorn, NE • 68022
IMPORTANT:	This will be a JNC Sanctioned Points Show. Exhibitors do not need to be JNC members to participate. Classes and divisions will meet JNC guidelines with the addition of feeder calf, bucket calf, and peewee showmanship classes. Show is a "Blow & Go" Show. No adhesives or paints allowed. NO POWER PROVIDED AND WASH RACK SPACE LIMITED Health Papers are required for out-of- state livestock.
Premiums:	Champion Steer \$200
70% Payout of Entry Fees	Reserve Champion Steer \$100
back in Class Money.	Champion Market Heifer \$100
	Reserve Champion Market Heifer \$100
	Overall Champion Market \$400
Premiums will be mailed	Overall Reserve Champion Market \$200
after July 24th, 2020.	Champion Breeding Heifer \$200
	Reserve Champion Breeding Heifer \$100
	Champion Feeder Calf \$100
	Reserve Champion Feeder Calf \$50
	Champion Bucket Calf \$100
	Reserve Champion Bucket Calf \$50
	Showmanship \$100 added to Jackpot
	Best of Douglas County \$30

Beef Guidelines:

FOR ADDITIONAL INFORMATION: Refer to the GENERAL & ANIMAL RULES AND REGULATIONS.
Show will follow JNC guidelines

ANIMAL IDENTIFICATION: An exhibitor must exhibit breeding heifers, market beef, and feeder calves that have been properly identified. The ID's, registration papers, and tattoos for all entries will be checked by the Superintendent when the animal is brought to the Fair.

ENTRY LIMIT: An exhibitor is limited to exhibiting TWO market beef animals, TWO breeding beef animals, and TWO feeder calves.

SHOW ORDER: Bucket Calves, Feeder Calves, Breeding Heifers, Showmanship, Market Beef

BREEDING HEIFERS: Breeding heifers registered with their breed association and are born after January 1, 2018 are eligible to show in these sections. To qualify as purebreds or high percentages in their respective breed, registration papers and tattoos are required to be shown to the Superintendent at Check-In. Heifers that are non-registered or crossbred will be exhibited in the Commercial Breeding Heifer class.

A Champion Breeding Heifer, Reserve Champion Breeding Heifer, and Third Overall Breeding Heifer will be selected from breed champions and reserve champions. Shown by breed. Large breed classes will be broken into smaller classes based on birthdate at the discretion of the show Superintendent.

MARKET STEERS & HEIFERS: Market Steers will be divided into classes by breed. Classes will be further divided into weight division(s) at the discretion of the Superintendent. Market Heifers will be divided into classes by weight at the discretion of the Superintendent. A Champion and Reserve Champion Market Heifer will be selected. A Champion and Reserve Champion Market Steer will be selected. An Overall Champion Market Beef, Reserve Champion Market Beef, and Third Overall Market Beef will be selected.

Division 1101 - Breeding Heifers

class #

- 01 Angus
- 02 Balancer
- 03 Charolais
- 04 Charolais Composite
- 05 Chiana
- 06 Hereford
- 07 Maine Anjou
- 08 Maine Angus
- 09 Maintainer
- 10 Red Angus
- 11 Shorthorn
- 12 Shorthorn Plus
- 13 Simmental
- 14 Foundation Simmental
- 15 Commercial (Crossbred)

Division 1003 - Showmanship

(Jan. 1st Age)

class #

- 01 Senior (15-21)
- 02 Intermediate (10-14)

Division 1005- Bucket Calves

Class #

- 01 Sr. Bucket Calves
- 02 Jr. Bucket Calves

Division 1102- Market

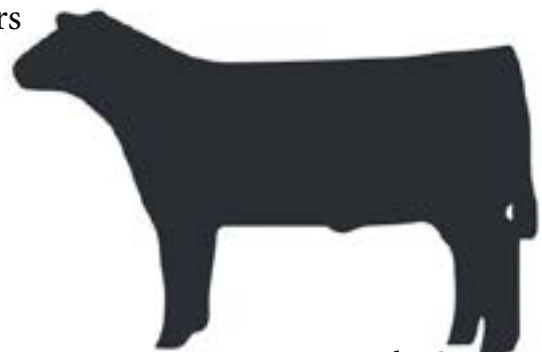
class #

- 01 Market Heiferes
- 02 Angus Steers
- 03 Charolais Steers
- 04 Charolais Composite Steers
- 05 Chiana Steers
- 06 Hereford Steers
- 07 Maine Anjou Steers
- 08 Maintainer Steers
- 09 Shorthorn Steers
- 10 Shorthorn Plus Steers
- 11 Simmental Steers
- 12 Foundation Simmental Steers
- 13 Crossbred Steers

Division 1004- Feeder Calves

Class #

- 01 Feeder Heifers
- 02 Feeder Steers



DouglasCountyFair.org